



# GAT MONTHLY MEMBERSHIP PROGRESS REPORT

Results as of: 5/31/2023

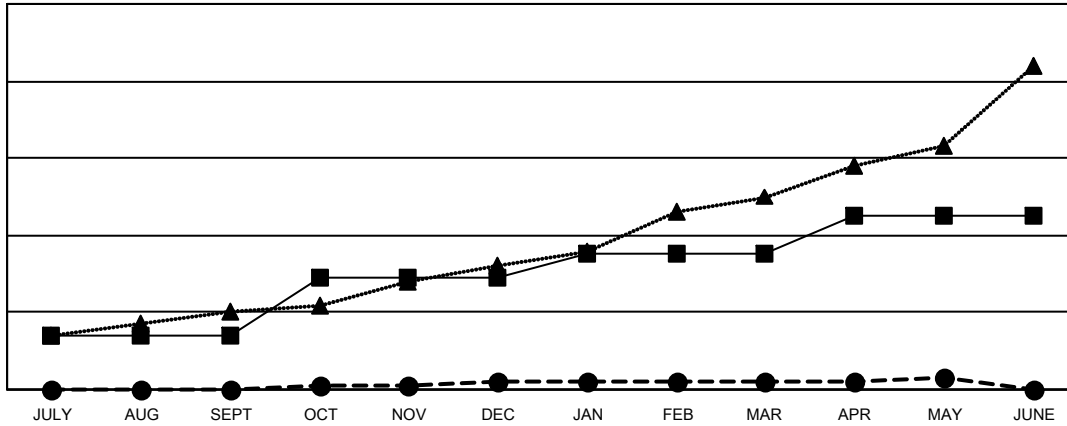
Multiple District 305

LOCATION: PAKISTAN

Clubs			
RESULTS FOR 2022-2023			
QUARTER	NEW CLUB GOAL	NEW CLUBS	DROPPED CLUBS
JULY/AUG/SEPT	14	0	3
OCT/NOV/DEC	15	2	21
JAN/FEB/MAR	6	0	5
APR/MAY/JUNE	10	1	1

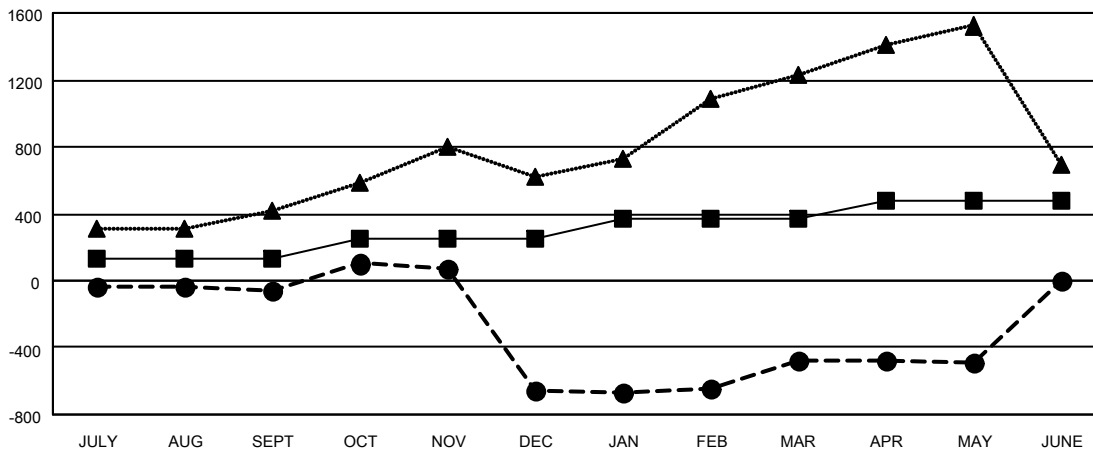
Members			
RESULTS FOR 2022-2023			
QUARTER	MEMBER GROWTH NET GOAL	MEMBER GROWTH ACTUAL	DROPPED MEMBERS ACTUAL (including transfers)
JULY/AUG/SEPT	135	223	266
OCT/NOV/DEC	120	438	983
JAN/FEB/MAR	110	420	156
APR/MAY/JUNE	115	205	173

GOALS AND ACTUAL NEW CLUBS CUMULATIVE



- - CURRENT YEAR GOALS FOR NEW CLUBS
- - CURRENT YEAR ACTUAL NEW CLUBS
- ▲ - LAST YEAR ACTUAL NEW CLUBS

GOALS AND ACTUAL MEMBERS CUMULATIVE



- - MEMBER GROWTH NET GOAL
- - MEMBER GROWTH ACTUAL
- ▲ - LAST YEAR MEMBERSHIP ACTUAL

<b>DROPPED CLUBS: 30</b>	166 CLUBS OF 407 ADDED 1 OR MORE NEW MEMBERS	<b>GENDER DISTRIBUTION</b>
<b>DROPPED MEMBERS</b>	<a href="#">CLICK HERE FOR CUMULATIVE MEMBERSHIP DATA</a>	MALE 6,328 (75.62%)
DECEASED 3		FEMALE 2,040 (24.38%)
CLUB CANCELLED 463		NON BINARY 0 (0.00%)
OTHER 1,112		PREFER NOT TO ANSWER 0 (0.00%)
<b>TOTAL 1,578</b>		<b>TOTAL FAMILY UNIT MEMBERS 6,896</b>
		<b>FAMILY MEMBERS PAYING HALF DUES 5,253</b>